

UNIQUELY LEE

The Features That Bring Processing Perfection.



3A SANITARY MANUAL BALL VALVES

Exclusive Simplified Design for Easier Cleaning, Higher Production and Lower Ownership Costs

UNIQUELY LEE:

3A Sanitary Manual Ball Valves

For operators in the food, beverage, bio/pharma and chemical industries, cleaning and sanitizing procedures are top priorities. To be effective, production teams must adhere to strict product-safety requirements while maintaining production levels and minimizing downtime.

The selection of high performance processing equipment that is also specifically engineered to save time on cleaning and maintenance can yield several important benefits to these operators, including faster turnaround in batch production, shorter downtime intervals, lower maintenance costs and lower total ownership costs.



3A SANITARY MANUAL BALL VALVES

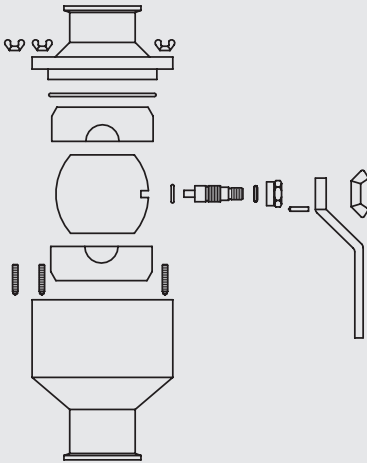
Lee 3A Certified Sanitary Ball Valves: The Industry Standard for Quality, Performance and Safety

As the industry's first USDA-approved ball valve, patented in 1971, the Lee 3A Sanitary Certified Ball Valve is a long-time, USDA-listed product and an ideal choice whenever ball valves must be specified for sanitary applications in demanding process operations.

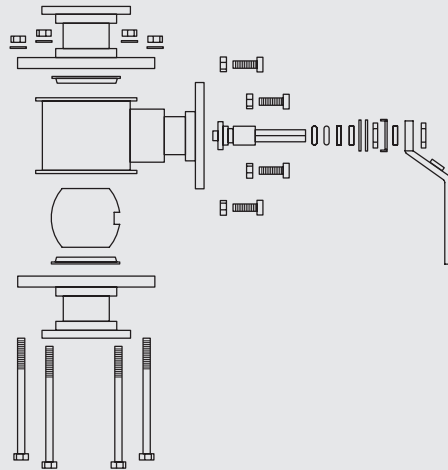
Available in a variety of models, sizes and connection options, Lee 3A Sanitary Certified Ball Valves are designed to meet the highest safety standards for critical processing applications and add efficiency to cleaning and maintenance procedures. In fact, they are so well recognized by state and federal inspectors for their high performance in sanitary plant operations that, by specifying and installing Lee ball valves, you can streamline periodic state and federal food-safety inspections in your processing facility.

Exclusive 2-Piece Design Reduces Costs on Valve Service

Lee Two-Piece Valve Body Design



Competitor's Three-Piece Valve Body Design



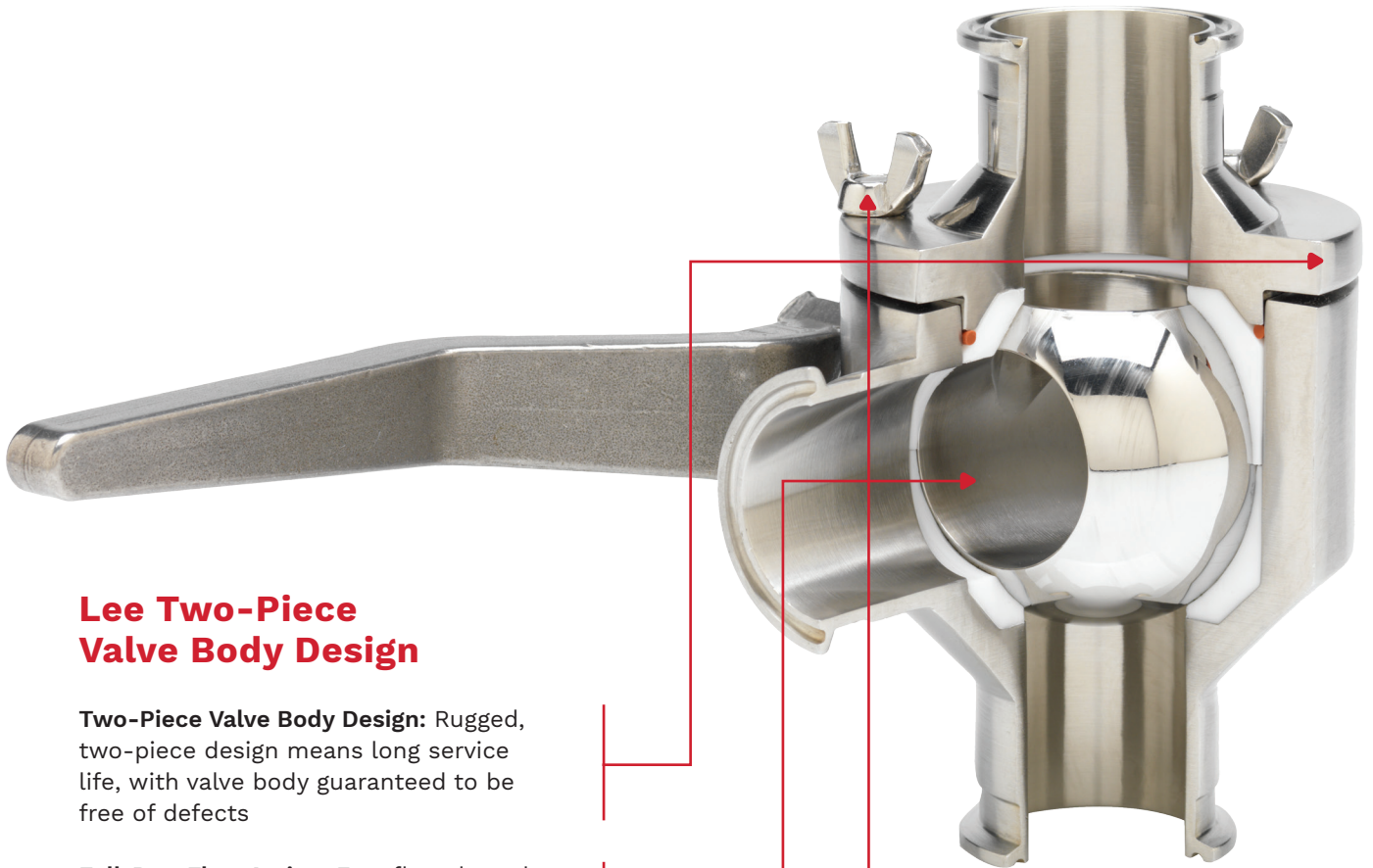
The exclusive, two-piece design of the Lee sanitary ball valve (at left), compared to conventional three-piece designs (on right), features tool-free disassembly for significantly faster teardown, cleaning and service.

**Lower Replacement
Parts Count:**

Fewer parts per valve
reduces costs for both
service and replacement
parts inventory

**Precision Stainless Steel Valve
Body Construction, Guaranteed
Free of Defects**

To meet 3A sanitary standards, valve bodies for Lee sanitary ball valves are precision-machined from 316L stainless steel and carry a defect-free guarantee on the valve body. Internal seals are available in either mica-filled PTFE (used by most customers and offering greater durability under high heat and pressure) or PTFE (used for standard-duty and three-way valve applications.)



Lee Two-Piece Valve Body Design

Two-Piece Valve Body Design: Rugged, two-piece design means long service life, with valve body guaranteed to be free of defects

Full-Port Flow Action: Free flow through valve body and rotating internal valve ball provide optimized flow from a vessel or inline-piping assembly

Tool-Free Disassembly: Fast breakdown by hand means significantly less time spent on cleaning and scheduled maintenance for each valve in your facility

Exclusive, Two-Piece Body Design Simplifies Teardown, Cleaning and Service

The exclusive two-piece design of Lee sanitary ball valves enables fast and easy disassembly by hand, a significant departure from conventional three-piece valves — with top, middle and bottom valve body sections — that require tools and more time for disassembly and service.

This two-piece body — and the fewer parts it requires — provides important business benefits to a food, beverage, pharmaceutical or chemical operation:

Lower maintenance costs due to faster valve teardown and service:

For both normal teardown and cleaning, as well as periodic service, your production and service teams will spend significantly less time cleaning and maintaining Lee ball valves compared to other ball valves. When each service task is multiplied throughout the year for every ball valve in your plant, this time savings represents a substantial annual-labor-cost savings to your business.

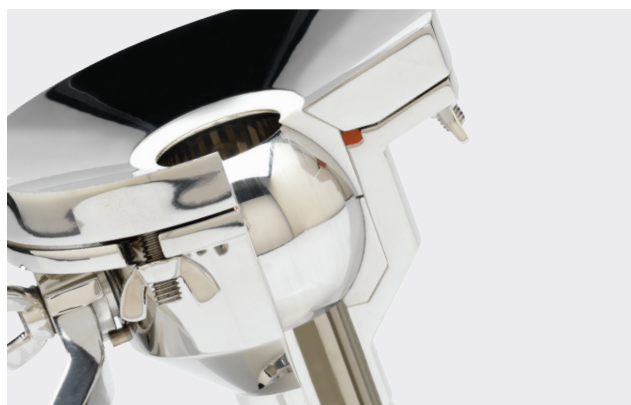
Increased production due to shorter service intervals:

Time saved through shorter cleaning and maintenance intervals also increases available production time, since these production processes can get back online in less time.

Eliminating unscheduled downtime costs caused by valve failure:

Because Lee sanitary ball valves have fewer parts than a conventional three-piece design, they have fewer potential failure points for leakage and valve wear. This helps eliminate unscheduled downtime costs due to valve failure.

When you consider these important service and production savings, you will find that they result in overall lower total ownership costs for Lee ball valves.



Jacketed Ball Valves

Use Lee Jacketed Valves In Any Process Application Where Temperature-Induced Solidification is a Concern

The Lee jacketed 3A sanitary ball valve is specially engineered to apply consistent, trouble-free heating and cooling at the valve body. This eliminates product build-up in the valve caused by solidification due to temperature changes during vessel discharge and pipeline flow.

This is particularly important in process applications where product solidification is a concern, such as:

- Liquid chocolate products (heating)
- Confectionery products (heating)
- Meats and meat products (heating)
- Salad dressings (cooling)

To ensure temperature consistency, the Lee jacketed ball valve is precision-engineered with a durable, stainless-steel direct jacket enclosing the valve body. Inlet and outlet connections for permanent steam/water heating and cooling maintain the desired temperature or product composition as the product flows through the valve area.



Compared to other methods of applying heat or cooling to a conventional valve (e.g., heat tape or bolt-on jackets), the Lee jacketed ball valve applies more consistent, controllable and reliable heating (or cooling) at the point of discharge from a vessel or to valves in other pipeline locations.

The thermal or cooling performance of Lee jacketed sanitary ball valves addresses an important potential failure point in many processing operations, thus ensuring product quality and eliminating downtime required to clear and clean valves during production.



P.O. Box 688 | Philipsburg, PA 16866
P. (814) 342-0461 | F. (814) 342-5660
www.leeind.com