

Jacketed Ball Valves



LEE INDUSTRIES

Processing Perfection.™

P.O. Box 688 | Philipsburg, PA 16866
P. (814) 342-0461 | F. (814) 342-5660

Fluid Transfer In-Line and Flush Bottom Sanitary Ball Valves are designed for unobstructed flow while discharging or in-line piping of liquid, semi-liquid or solid-in-liquid batches. The unique design of Fluid Flow Jacketed Valves makes them an ideal processing-flow solution for food, cosmetic, pharmaceutical and sanitary chemical industries.



Jacketed Ball Valves Standard Features

- Full jacketing on main valve body
- Jacket accepts various media applications for both hot or cold temperature requirements
- Easily installed in product line
- Full port design allows for unobstructed product flow
- Positive shut-off eliminates excess overruns
- In-line adjustment to compensate for seal wear
- Easily disassembled, no special tools required
- Low maintenance

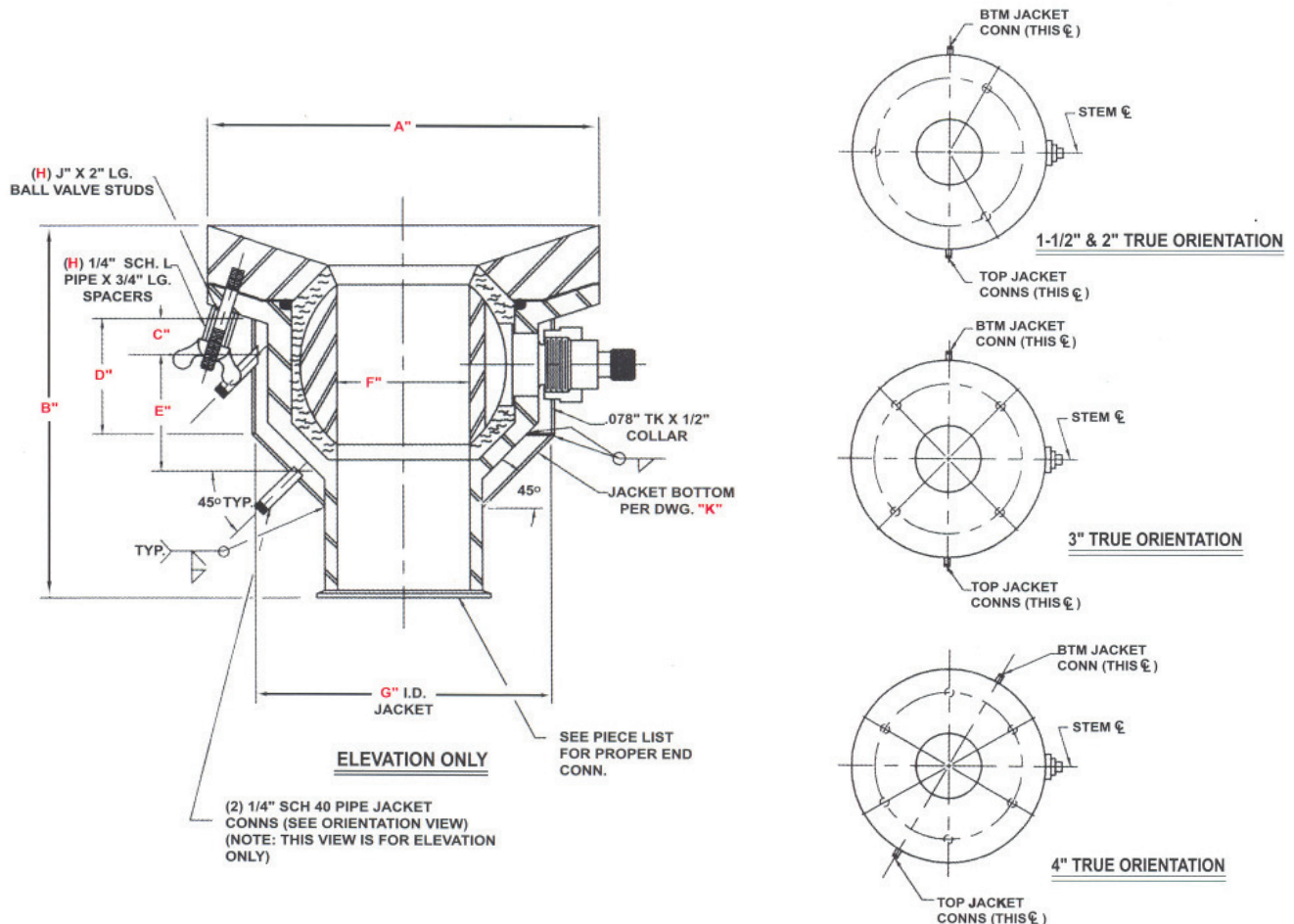
JACKETED BALL VALVES

As with the other lines of Fluid Transfer Valves, these jacketed valves are precision made of Type 316 stainless steel. They are USDA approved, meet 3A specifications, and are designed for corrosion-resistant, sanitary applications where solidification of a product is a concern. The solid construction of these jacketed valves provides maximum reliability and failure-free performance under the most extreme conditions. Cleanup and maintenance costs are substantially reduced due to an efficient and simple design that allows for extremely fast breakdown...by hand... no special tools required. Fluid Flow valves have also proven to be especially reliable when partnered with related processing applications such as metal detection equipment.

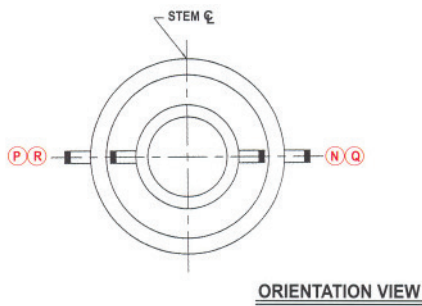
Standard fully encapsulating (no fillers), Mica-Filled Teflon Seals provide the maximum reduction in product entrapment, while the full-port design eliminates product flow restrictions.

Standard sizes of the Jacketed Valves range from 1-1/2" through 4" 1.0. flow diameter. Maximum operating temperature is 3500 F with a working pressure up to 400 PSIG. The standard 1.0. finish is a sanitary #4 which is also offered as an option for the 0.0. finish.

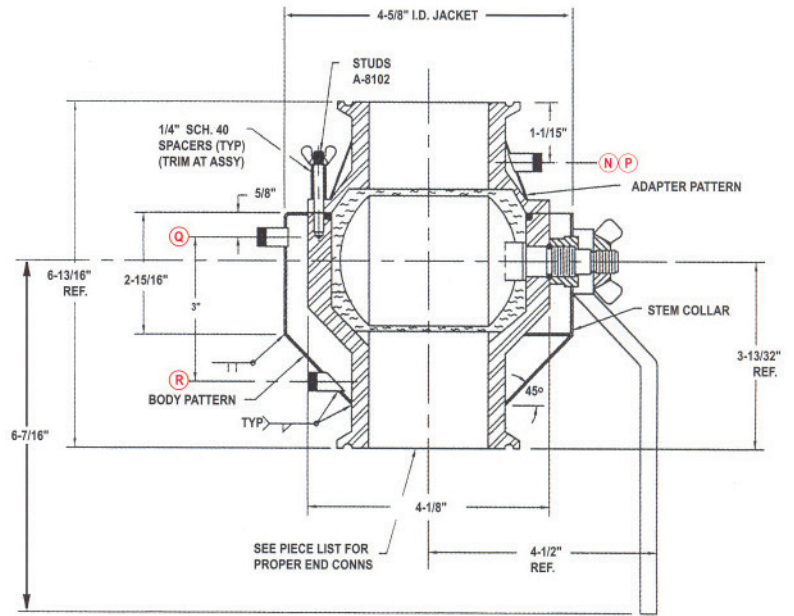
Electropolish is also available. Sanitary quick clamp connections are also standard with special end connections and various automation choices offered as an option.



S	A	B	C	D	E	F	G	H	J	K	L
1 1/2"	5 1/2"	4 5/8"	1/2"	1 5/8"	1 3/4"	1 1/2"	4 1/8"	3	5/16" - 18NC	A-14483	40
2"	6"	5 3/16"	1/2"	2 1/16"	2 1/4"	2"	4 5/8"	3	5/16" - 18NC	A-14483	40
3"	8"	7 1/16"	5/8"	3 1/8"	3 1/2"	3"	6 1/8"	4	3/8" - 16NC	A-13099	10
4"	10"	9 5/8"	3/4"	4 1/4"	4 1/2"	4"	7 3/4"	6	3/8" - 16NC	A-14898	10



MARK	NO. REQ'D	SIZE	SERVICE	REMARKS
N	1	1/4"	JKT. INLET	NPT
P	1	1/4"	JKT. OUTLET	NPT
Q	1	1/4"	JKT. INLET	NPT
R	1	1/4"	JKT. OUTLET	NPT



General Specifications

- Sizes: 1 1/2", 2", 3", 4"
- Maximum Pressure: 400 PSIG
- Maximum Temperature: 350°F
- Jacket Specifications: 100 PSIG
- Constructions: USDA approved and meets 3A specifications. All 316 stainless steel contact parts with Mica-filled Teflon Seals.
- Finish: Sanitary #4 I.D. Standard